

# CS 1000 INSTALLATION INSTRUCTIONS

## NOTICE TO OWNER/INSTALLER

These instructions are intended as a guideline for installation only. They do not imply any liability or responsibility on the part of the manufacturer for improper installation or faulty workmanship on the job site.

The CS 1000 is manufactured and tested to exceed the industry standards, and verified by independent laboratory testing. We highly recommend having your installation reviewed by a professional engineer to confirm that your pipe, beam, or wall mounted CS 1000 unit is structurally secure.

The CS 1000 is a fall arrest safety device designed specifically to retrofit with the TW 1200 Curtain Winch only. Contact Tork Winch for use in other applications.

The CS 1000 must NOT be used in application lifting or lowering personnel.

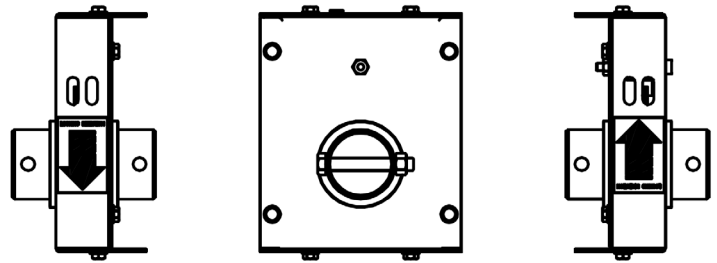
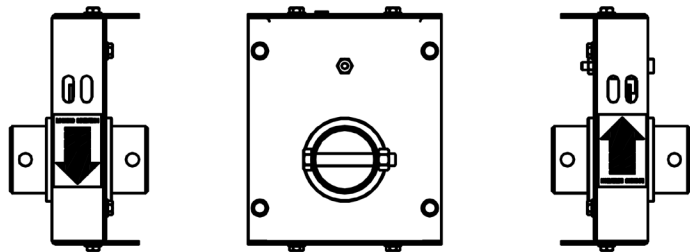


Figure 1 - Locking Direction

## PROCEDURE

1. Pay close attention to the two locking direction arrow labels on each side to the CS 1000. Refer to Figure 2.
2. When the CS 1000 is mounted onto the drive pipe, line up one of these sides parallel with the curtain hanging on the same side of the drive pipe.
3. Orientate the arrow on the same side as the curtain with the arrow pointing down in the same direction as the curtain hangs from the pipe.
4. The TW 1200 and CS 1000 can be mounted with either the 6 inch centerline to flange side up or the 3.5 inch centerline to the flange side up. Ensure that the CS 1000 is mounted the same as the TW 1200 units.
5. The supplied mounting plate to be located based on whether the CS 1000 flanges point towards or away from the TW 1200. Refer to Figure 3 for correct location.
6. Locate the mounting plate to the bottom flanges of both the CS 1000 and TW 1200 units as shown in Figure 2 and fasten with the hardware supplied. Refer to Figure 4. Note that the bolt is inserted from the underside.



## LOCKING DIRECTION

When installing the CS 1000 it is important to note that it has a passive and an active turning direction. Installing the unit backwards will mean the locking mechanism will NOT engage during a freefall condition. Refer to the locking direction arrows on the CS 1000.

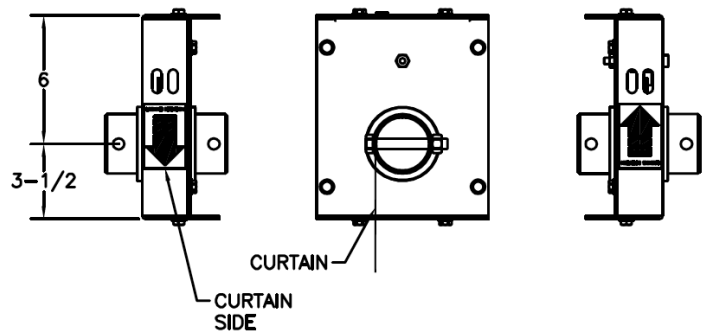


Figure 2 - Locking Direction Orientation

Installation Instructions Continued >

# CS 1000 INSTALLATION INSTRUCTIONS

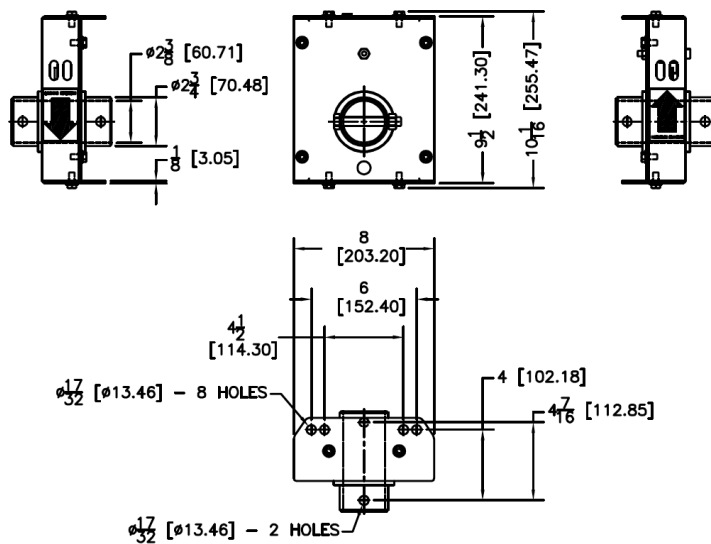
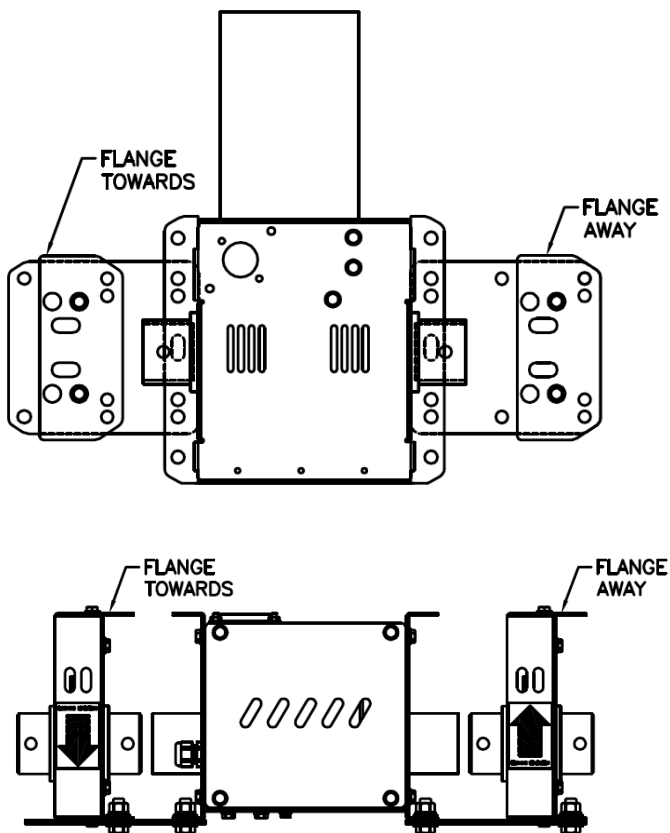


Figure 5 - Dimensions

Figure 3 - Mounting Plate Location

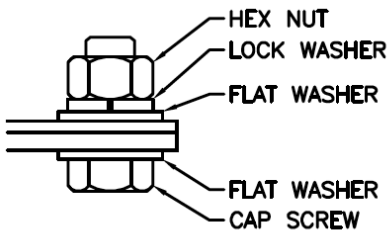


Figure 4 - Fastener Orientation