

## TECHINCAL SPECIFICATIONS

**Max. Safe Working Load**

**Load Type**

**Rope Type**

**Rope Travel**

**Rope Speed**

**Gear Reduction**

**Rope Drum**

**Braking**

**Pressure Roller**

**Frame Construction**

**Crank Handle Position**

**Weight (As Shipped)**

### WARNING

**Not to be used for lifting people.**

**Not to be used for lifting things over people without use of a safety locking device or an automatic fall arrest system.**

**Specifications subject to change without notice.**

## HW 1800 MANUAL WINCH

Designed to lift a vertical weight of 1000 lbs / 450 kg.

Vertical lifting.

¼" / 6.35 mm 7 x 19 aircraft cable (rope not supplied with winch).

25 ft / 7.62 meters on one layer. A second layer, for 45 ft / 13.7 meters total, may be wound of if required.

1 turn of crank equals 0.44" of rope travel (650 turns to wind in 25 ft).

Proprietary composite self lubricating gearing with no oil bath.

Grooved for accurate winding. Supported by large diameter ball bearings, and with positive, through the drum type rope anchor.

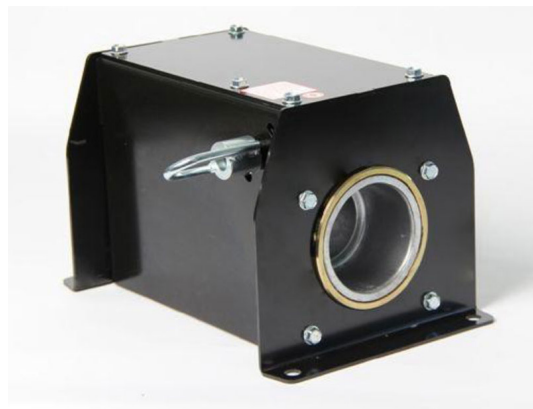
Double worm gearing plus passive uni-directional brake.

Constant pressure type with torsion spring mounting.

Precision interlocking steel frame for high rigidity and precise alignment. Semi enclosed for safety. Powder coated for corrosion resistance.

Crank input on bottom face of unit. Crank plugs in vertically.

38 lbs / 17 kg.



Call to speak with an expert:

**1-866-829-4411**

or visit us online:

**TORKWINCH.COM**