

TECHNICAL SPECIFICATIONS

Max. Safe Working Load

Load Type

Rope Type

Rope Travel

Rope Speed

Electrical Characteristics

Motor

Full Load Amperage

Motor Type

Duty Cycle

Gear Reduction

Rope Drum

Braking

Pressure Roller

Output Shafts

Limit Switches

Weight (As Shipped)

TS 1000 CURTAIN WINCH

Designed to lift a vertical weight of 800 lbs / 363 kg divided between TS 1000 motor and at least 2 PS 500 PosiSpools.

Vertical lifting of lighting pipes and other infrequently lowered units.

$\frac{3}{16}$ " / 4.76 mm 7 x 19 aircraft cable.

34 ft.

11 ft per minute / 3.35 meters per minute.

110 V, 60 Hz.

1 HP / 0.75 KW.

10 Amps.

Instant reverse, low maximum current draw design, thermally protected.

4 minutes on, 20 minutes off.

Proprietary composite self lubricating gearing with no oil bath.

Grooved for accurate winding. Supported by large diameter ball bearings, and with positive through the drum type rope anchor.

Double worm gearing plus passive uni-directional brake.

Constant pressure type with torsion spring mounting.

Steel hollow couplings with 2.40" bore.

Heavy duty upper and lower switches, gear driven for high accuracy.

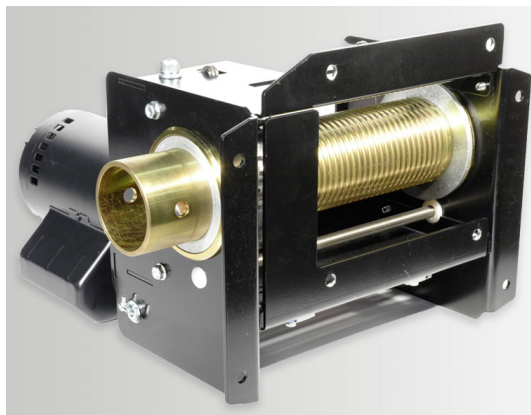
83 lbs / 38 kg.

WARNING

The system is built up using one TS 1000 motor plus at least 2 PS 500 PosiSpool units to provide lift lines at intervals of up to 12 ft span.

Interconnecting drive shafts are field-prepared (drilling only required) and are not included.

Specifications subject to change without notice.



Call to speak with an expert:

1-866-829-4411

or visit us online:

TORKWINCH.COM